



Nantucket Trellis

Assembly & Mounting Instructions

General Information:

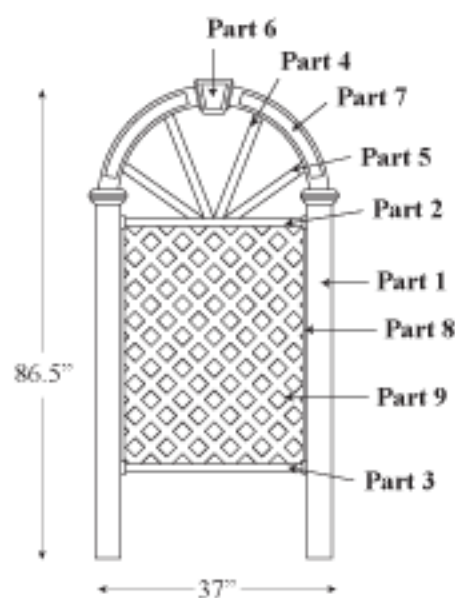
- Read instructions through carefully before beginning assembly.
- Identify each component from material list.
- When assembling components, place on a non-abrasive surface to avoid scratches.
- Do not use excessive force when assembling components.
- In the event of missing or defective parts, please call our customer service department at 1-800-282-9346 (ext.#20).

Materials Included: (In 2 boxes)

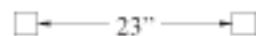
Part #	Description	Quantity
1	3 1/2" sq. x 78" Posts	2
2	1 3/4" sq. x 29 3/4" Top rail	1
3	1 3/4" sq. x 29 3/4" Bottom rail	1
4	7/8" x 1 1/2" x 19 5/8" Spokes	2
5	7/8" x 1 1/2" x 15 5/8" Spokes	2
6	Keystone	1
7	Arches	2
8	45 3/8" Lattice channels	2
9	29 1/2" x 48" Diamond lattice	1
10	Hardware kit (Includes):	
	Slotted half couplers	4
	3/4" Self-tapping stainless screws	26

Tools Required:

- Cordless drill with #2 Robertson bit
- Tape measure
- Level
- Shovel
- Pencil



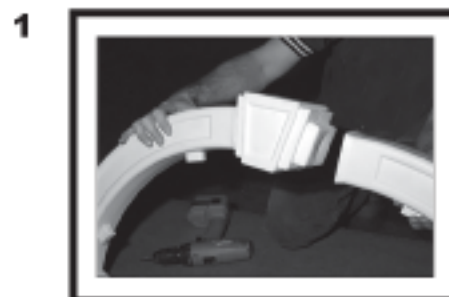
(Fig. 1)
Product dimensions & Part identification.



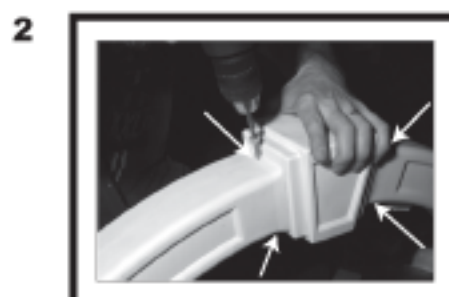
(Fig. 2)
Post layout for installation.

Materials (Optional): (Not Included)

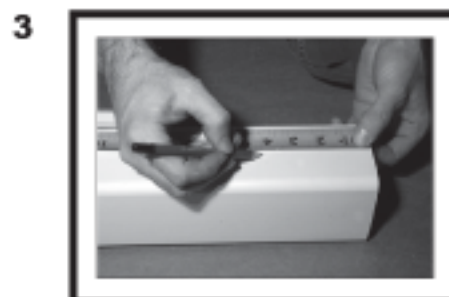
- Two bags of pre-mix concrete. *
- * Strongly recommended for installation in high wind or high traffic areas.



1 Take the arches (part 7) and snap them onto either side of the keystone (part 6).



2 Using four screws, fasten the arches to the keystone on both sides as illustrated (arrows show each screw location). **Note:** all screws are self-tapping and require no pre-drilling. Set aside the assembled arch.



3 Lay out one of the posts (part 1). Measure 4" from one end and put a mark in the center of the post.



4 Center the lattice channel (part 8) onto the post at the 4" mark. Using three screws, fasten the channel to the post at both ends and in the middle.



5 Center two of the slotted half couplers against each end of the lattice channel. Using the pilot holes provided, fasten each coupler to the post as illustrated. **Note:** make sure the slots in the couplers are facing the channel. Repeat steps 3 through 5 for the second post.



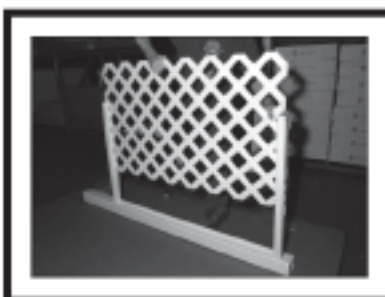
6 Insert the top rail (part 2) and bottom rail (part 3) into the couplers, making sure the grooves in each rail are facing the lattice channel. **Note:** the top rail goes into the coupler which is closest to the end of the post.

7



Hold the top rail firmly in place, and fasten it to the coupler using the pilot hole provided. Fasten the bottom rail in the same manner.

8



Slip the lattice (part 9) into the grooves between the bottom and top rail. Slide the lattice down to the post and into the lattice channel.

9



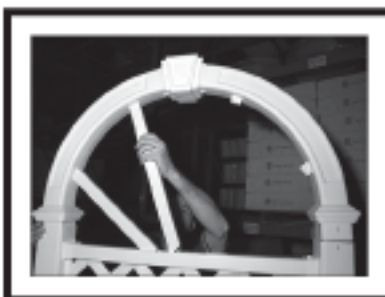
Flip the panel over onto the second post. Position the rail ends over the couplers, and carefully guide the lattice into the lattice channel. Make sure each rail end is pushed firmly into the couplers, and secure in place as shown in step 7.

10



Stand the completed panel up and position the arch over the posts. Slip one of the short spokes (part 5) into the closest hole in the top rail as illustrated. Push the opposite end onto the nearest arch socket.

11



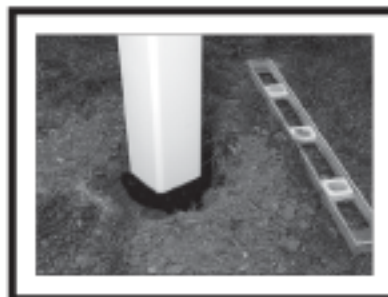
Slip one of the long spokes (part 4) into the next hole in the top rail as illustrated. Again, push the opposite end onto the next arch socket. Repeat steps 10 and 11 for the remaining spokes. **Note:** pay close attention to the angled ends of each spoke, to ensure a proper fit.

12



Hold one end of the arch down into the post and secure in place using two screws (arrows show screw locations). Position the screws directly under the arch cap to ensure proper attachment to the arch. Repeat this for the opposite side.

13



Dig two 12" deep holes in the desired location using the distance shown in (Fig. 2) on the front cover. Set the trellis into position, and use a level to check the posts. Once you are satisfied with the orientation, fill in the holes. For added stability in high wind or high traffic areas, we recommend using pre-mix concrete (not included).

Questions ? :

If you have any questions concerning the assembly or installation of this product and require assistance, please call our **Customer service department at 1-800-282-9346 (ext.#20)**, Weekdays from 8:00 am. to 4:00 pm. Eastern standard time.

If you have any comments or suggestions about our product or service, please let us know! Call: **1-800-282-9346 (ext.#24)**, or E-mail: info@newenglandarbors.com

To learn more about us, visit us on the web at: www.newenglandarbors.com